



OGIO® Caliber2.0 Long Sleeve OG105



Make a statement in the reimagined Caliber2.0 now with long sleeves.

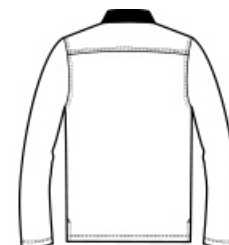
- 5-ounce, 100% poly pique with stay-cool wicking technology
- OGIO heat transfer label for tag-free comfort
- Flat knit collar
- OGIO jacquard neck tape
- Triple-needle shoulders and hem
- 3-button placket with dyed-to-match OGIO buttons
- Set-in, open hem sleeves
- O heat transfer on left sleeve

CARE INSTRUCTIONS

Machine Wash Cold With Like Colors. Do Not Use Fabric Softener. Do Not Bleach. Tumble Dry Low. Cool Iron. Do Not Dry Clean.

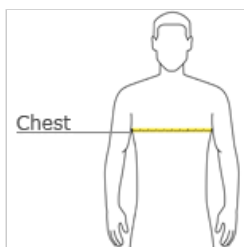


front



back

HOW TO MEASURE



CHEST WIDTH

Measure under the arm and around the fullest part of the chest with arms down, keeping tape horizontal.

SIZE CHART

	XS	S	M	L	XL	2XL	3XL	4XL
Chest	32-34	35-37	38-40	41-43	44-46	47-49	50-53	54-57

COLOR INFORMATION



Blacktop
PMS BLACK C



Bright White
PMS WHITE



Diesel Grey
PMS 7540C



Electric Blue
PMS 2145C



Navy
PMS 533C